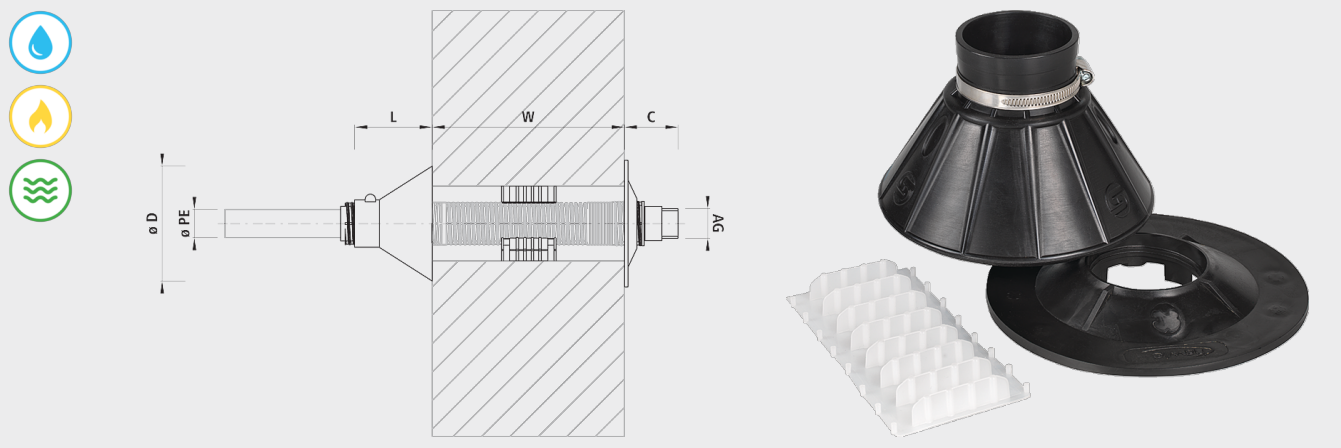


## Sealing for the trenchless installation, set

6871



### Application

- For the professional installation of wall ducts that are only accessible from the inside. (Trenchless pipeline construction)

### Characteristics

- Simple, inexpensive and safe installation of the wall duct that is gas- and water-tight.
- Professional sealing (grouting) of the wall duct gas and watertight
- Clean conical exterior wall/cover without any danger of water accumulation
- Turning and tensile forces are transmitted to the masonry
- The set consists of a watertight curtain (rubber), spacer, internal cover plate and fastening materials.

### Installation and assembly

- Prepare core drilling for mounting the wall duct. The outside wall must be clean in the region of the watertight curtain.
- Push the wall duct with mounted watertight curtain (note the wall thickness) into the core drilling, pre-tension grouting device tool from inside and pour out the grout (Beto Fix). After the curing time, remove the grouting device tool and mount the cover plate.
- After the curing time, remove the grouting device tool and mount the cover plate.
- Feedthrough of copper wire/ earthing strip is possible

### Caution

- W = the long wall duct must be used for a wall thickness greater than 250 mm.

		ø PE	AG	ø D (mm)	L (mm)	C (mm)	ø KB N (mm)	weight (kg)
6871025032	o	32/40	1"-5/4"	170	105	90-130	90	2.000
6871040000	o	50	1 1/2"	200	105	90-130	120	2.000
6871050000	o	63	2"	200	105	90-130	120	2.000
6871025132	x	32/40	1"-5/4"	170	105	90-130	90	2.000
6871040100	x	50	1 1/2"	200	105	90-130	120	2.000
6871050100	x	63	2"	200	105	90-130	120	2.000

x = Cover plate divided

o = Cover plate fixed