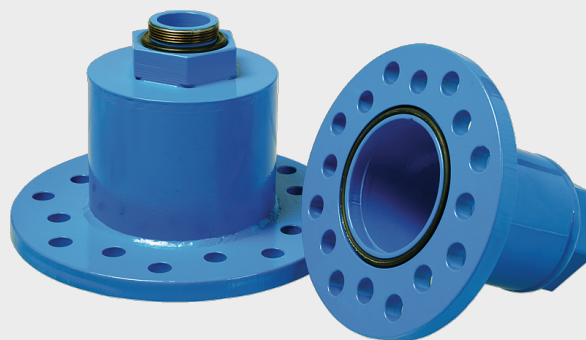
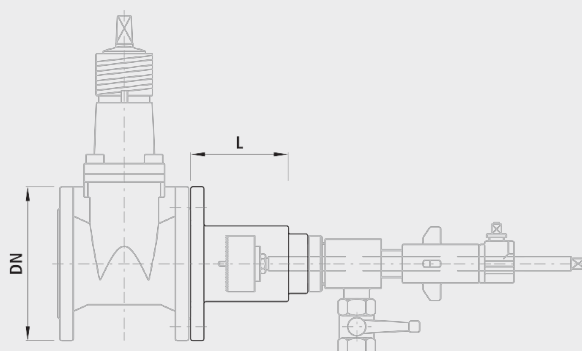


Tapping bell with male thread 2"

8301



Application

- Tapping can be carried out directly on a flanged slider under pressure by using this tapping bell and the Hawle tapping unit. The tapping bells are designed for flanges with different nominal widths. No additional tools are required.

Characteristics

- The Hawle tapping unit can be very easily mounted onto the thread outlet.
- The internal area of the bell is arranged to such a size so as to accommodate all the standard milling cutters.
- The flange connection is prepared for two sizes.

Material

- EWS-coated steel

Caution

- Requires a special tapping rod (longer)

| | DN | PN (bar) | L (mm) | weight (kg) |
|------------|---------|-------------|-----------|----------------|
| 8301050000 | 50 | 16 | 135 | 3.400 |
| 8301080100 | 80-100 | 16 | 130 | 5.300 |
| 8301125150 | 125-150 | 16 | 130 | 8.900 |